



# GAT MONTHLY MEMBERSHIP PROGRESS REPORT

Results as of: 6/30/2023

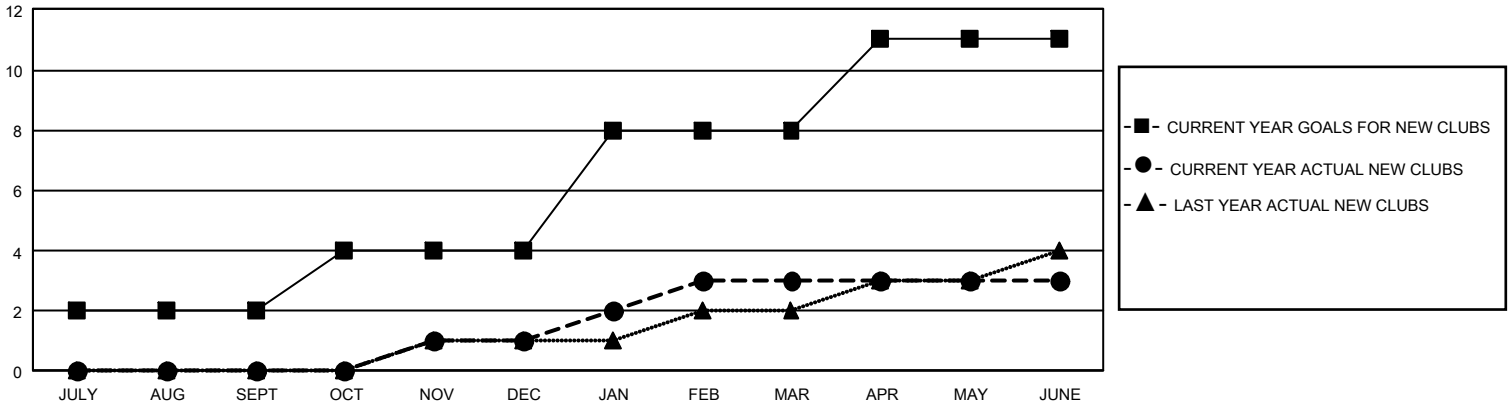
## GMT Constitutional Area 5 - J, Group J

REPORT DOES NOT INCLUDE CLUBS IN UNDISTRICTED AREAS.

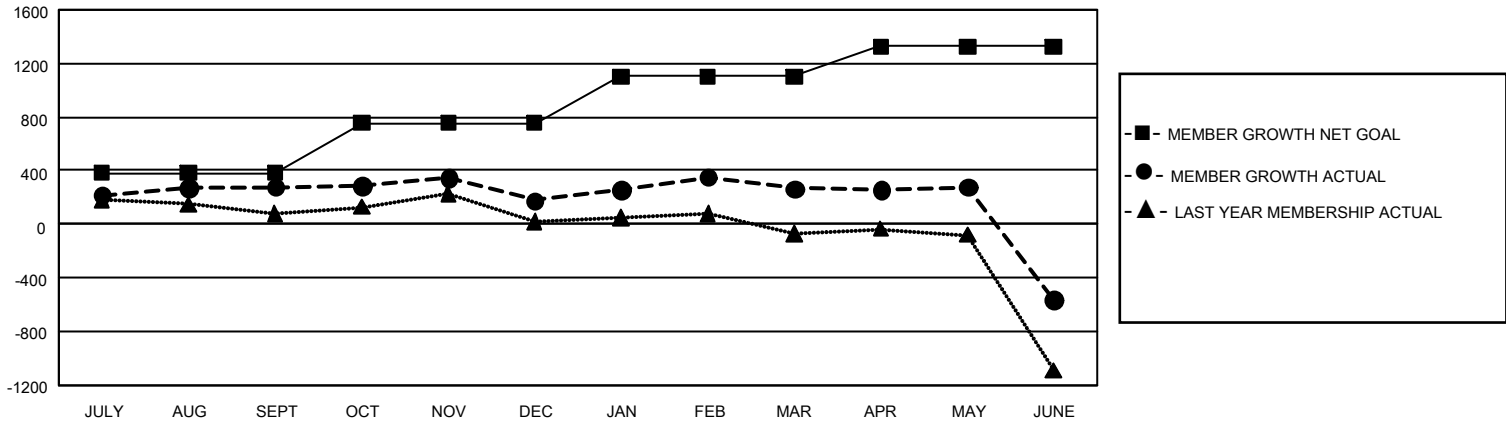
Clubs			
RESULTS FOR 2022-2023			
QUARTER	NEW CLUB GOAL	NEW CLUBS	DROPPED CLUBS
JULY/AUG/SEPT	6	0	1
OCT/NOV/DEC	6	1	0
JAN/FEB/MAR	12	2	0
APR/MAY/JUNE	9	0	8

Members			
RESULTS FOR 2022-2023			
QUARTER	MEMBER GROWTH NET GOAL	MEMBER GROWTH ACTUAL	DROPPED MEMBERS ACTUAL (including transfers)
JULY/AUG/SEPT	381	800	471
OCT/NOV/DEC	375	360	453
JAN/FEB/MAR	345	565	447
APR/MAY/JUNE	225	536	1,337

GOALS AND ACTUAL NEW CLUBS CUMULATIVE



GOALS AND ACTUAL MEMBERS CUMULATIVE



<b>DROPPED CLUBS: 9</b>	581 CLUBS OF 757 ADDED 1 OR MORE NEW MEMBERS	<b>GENDER DISTRIBUTION</b>	
		MALE 20,625 (78.67%) FEMALE 5,585 (21.30%) NON BINARY 0 (0.00%) PREFER NOT TO ANSWER 6 (0.02%)	
<b>DROPPED MEMBERS</b>		<a href="#">CLICK HERE FOR CUMULATIVE MEMBERSHIP DATA</a>	TOTAL FAMILY UNIT MEMBERS 6,927
DECEASED 217 CLUB CANCELLED 1 OTHER 2,491 <b>TOTAL 2,709</b>	FAMILY MEMBERS PAYING HALF DUES 3,780		